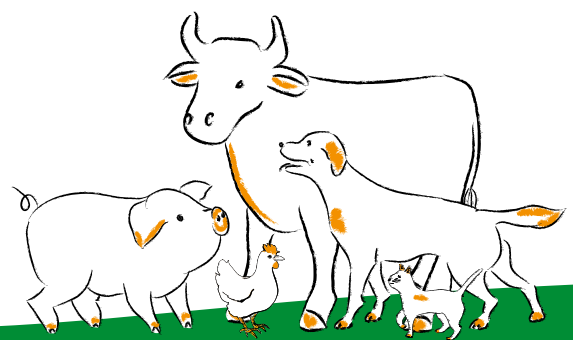
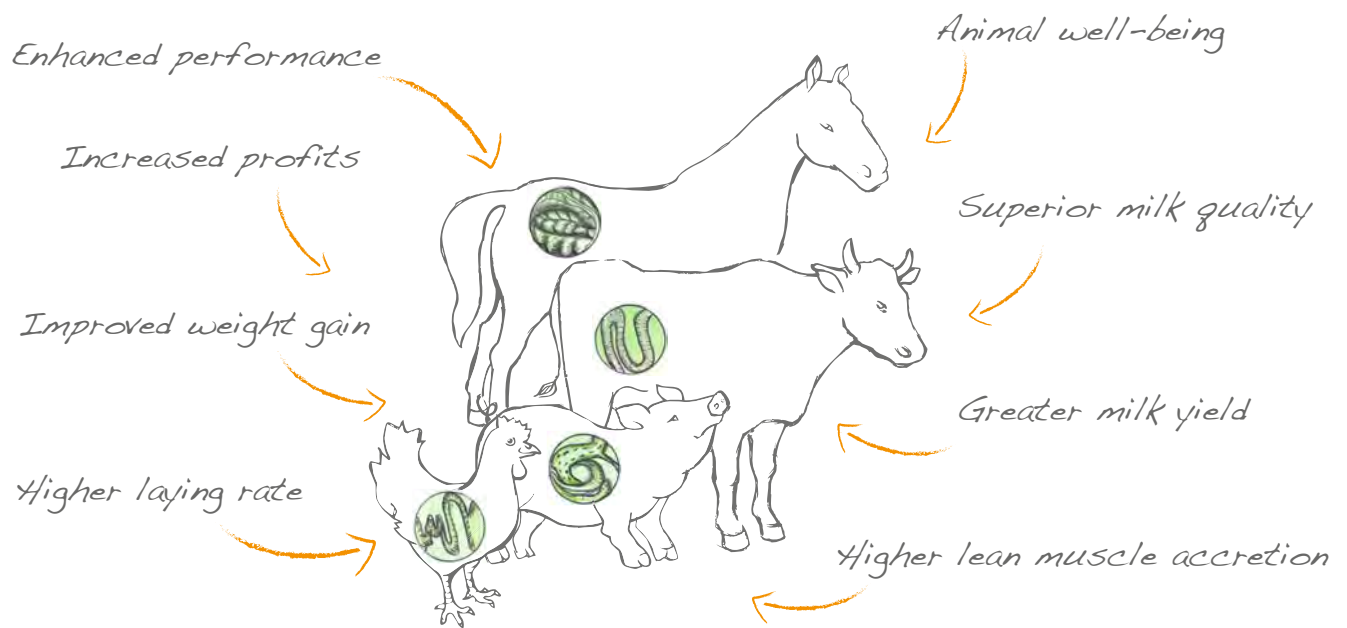


SANGROVIT[®] Extra





WHERE TO START

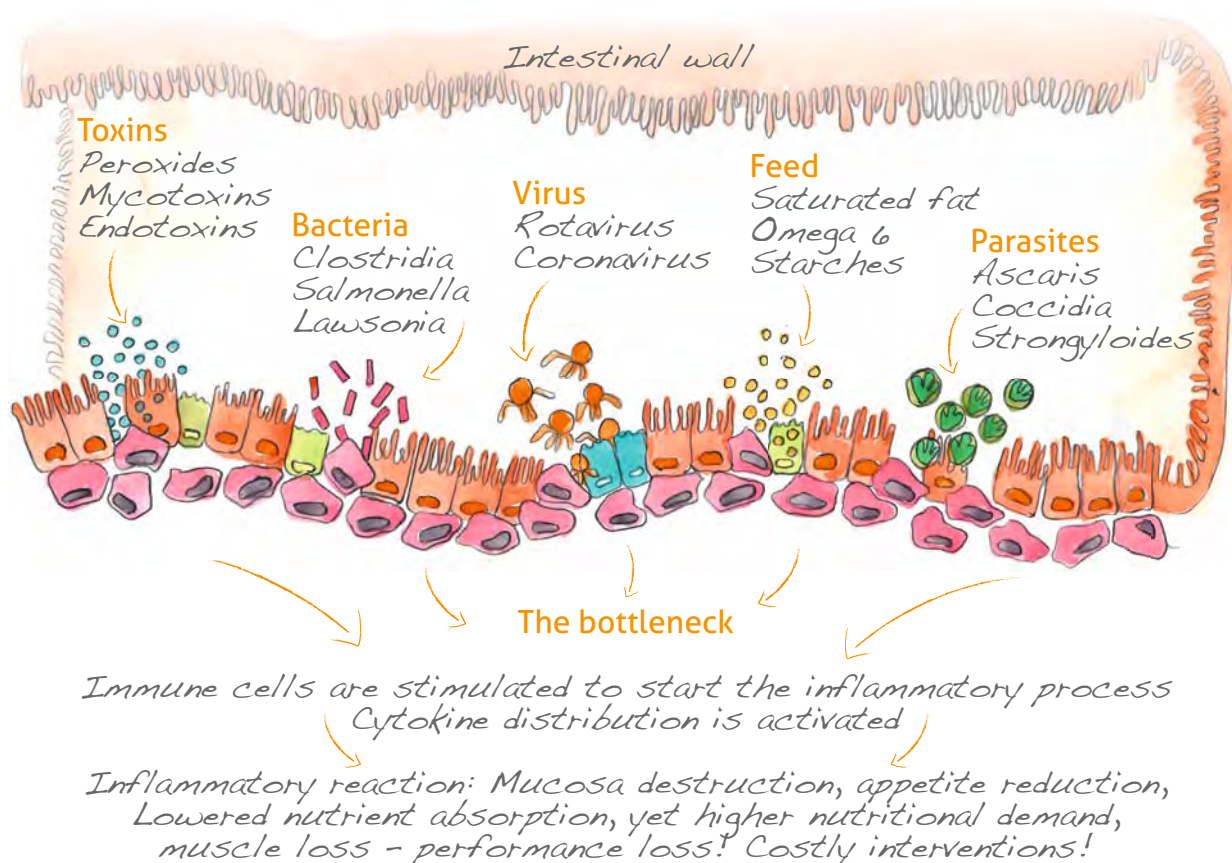
Enhanced animal performance and well-being is what we all strive for. Reducing the number of sick days is one of the most efficient and effective methods to accomplish this goal. Intestinal health is critical in this process. The intestine is the largest organ in the body, and the foundation of immunological defense and nutrient absorption. This complex ecosystem can also be one of the weakest points of the animal's natural defenses and the site of proliferation for many common disease pathogens like *E. coli*, *Clostridium sp.*, *Salmonella sp.* and *Eimeria sp.* (Coccidia). The importance of gut health is highlighted in the billions of dollars spent on research, therapies, and interventions targeted at conditions seen in the graphic to the right. Simply put, gut health is central to animal health and well-being, and the focal point for many of the losses and treatment regimens aimed at improved performance through nutrition, disease prevention, and recovery.

TRADITIONAL APPROACH

Often, the traditional approach is based on specific causative agents. This means that traditional contemporary treatments mostly focus on the different primary causes of disease and/or performance loss. Under field conditions, it takes work, some trial and error, diagnostics, and even a little luck to get the right combination of all treatments that work effectively, and most importantly economically. Adding to the complexity, being able to control the causative agents of disease and performance loss is only part of the solution. Performance loss, to a large degree, results from the overreaction of the animal's immune system which leads to an ongoing inflammation as well as nutrient and energy depletion.

THE NEW APPROACH

The consequential physiological effects of many different stressors like disease pathogens, nutritional antigens or toxins all trigger a cascade of reactions in the animal's body leading to the inflammatory response. It makes natural sense. A new approach focused on the downstream inflammatory process, could provide physiological and nutritional support beyond the traditional therapies designed to prevent or control all the specific insults. In simple terms: "We can achieve a broader effect by focusing on the common performance robbing physiological effects that result from numerous upstream causes."



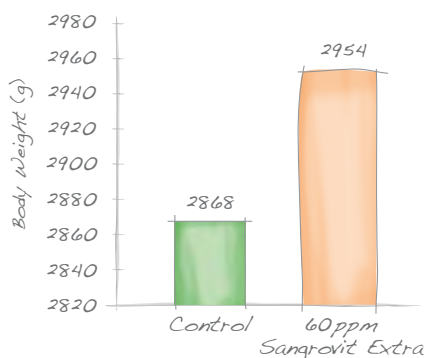
THE NEW BENEFITS

By helping control the downstream effects of many broad and different causative agents and stressors, we experience more consistent results of intervention, and better results, regardless of the root cause. Feed intake is improved and performance loss avoided. The valuable nutrients you've paid for and carefully provided can be spared and used for growth, immunity or reproduction, rather than the inflammatory process. The integrity of the intestinal barrier is maintained. Nutrient absorption is enhanced and the negative effect of toxins, parasites, or pathogens is minimized, regardless of serovar, strain or type. A healthy gut supports good nutrition, medical interventions and vaccination-response by making them all more efficient. Naturally.

THE NEW TOOL: SANGROVIT® EXTRA

Sangrovit® Extra is an innovative, patented and scientifically proven solution that allows you to implement this new approach efficiently and economically. It improves feed intake, digestive performance and leads to a positive effect on amino acid balance and protein utilization. Sangrovit® Extra is a natural high performance feed ingredient that can be delivered to all livestock and poultry without a withdrawal period.

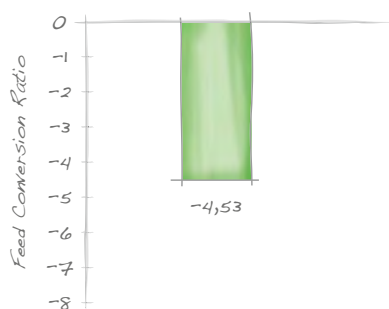
Sangrovit® Extra is the latest version of the world's leading phytogenic feed ingredient, Sangrovit®. It consists of various nutritional acids and a unique composition of four different alkaloids that are obtained from special plants. The extra alkaloids imply more power and a wider range of efficient use. Independent scientific research attributes several beneficial effects to the alkaloids contained in Sangrovit® Extra that go beyond improved feed intake.



EFFECT OF SANGROVIT® EXTRA ON AVERAGE DAILY WEIGHT GAIN

The addition of Sangrovit® Extra led to a significant increase in average daily gain in broilers in this study.

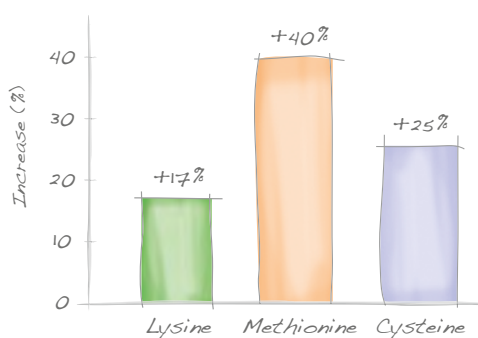
(Prof. S. L. Vieira, Federal University of Rio Grande do Sul, Brazil, Male Cobb x Cobb 500 broilers, day 42)



EFFECT OF SANGROVIT® EXTRA ON FEED CONVERSION RATIO

Sangrovit® Extra clearly improved the feed conversion ratio in grow / finish pigs. Less feed – more profit!

(Analysis of 17 trials, 4500 animals in total)



EFFECT OF SANGROVIT® EXTRA ON AMINO ACID ABSORPTION

You spend a lot of money providing well-balanced diets that are carefully formulated. Studies show that Sangrovit® Extra helps ensure nutrient absorption across the broad insults that happen in the real world of production. Think of it as life insurance for the expensive nutrients in your diets.

FITS YOUR VALUES

Production of food animal protein has never been easy. Tight margins, disease risk, consumer preference changes and market fluctuations have always been and will always be part of the business. Successful nutritionists, producers, and veterinarians value measurable results backed by science.

Sangrovit® Extra and Phytobiotics fits your values. Proven performance, reliable economical returns on investment when the market is high or low. We provide the base level support against the negative gut level effects your animals are faced with day in and day out. We understand the challenges of modern production systems in good markets and bad. In more profitable times you need superior performance. When economics are tight and you need to scale back some of the ingredients that target more specific but less frequent issues you face, Sangrovit® Extra can still be the broader effect, base level support you can count on to deliver economically.

APPLICATION

Sangrovit® Extra is an innovative solution to improve feed efficiency and increase appetite. Broad, nutritional and physiological gut level support during periods of stress, regardless of the cause. Sangrovit® Extra dosage recommendation:

RECOMMENDED FOR	IN FEED
Sow	75 – 120 (g/t)
Piglet	50 – 150 (g/t)
Growing / Finishing pig	60 – 150 (g/t)
Broiler	60 – 150 (g/t)
Laying / Breeding hen	60 – 150 (g/t)
Turkey poult P1 – P3	75 – 150 (g/t)
Fattening turkey P4 – P6	60 – 150 (g/t)
Rabbit	75 – 150 (g/t)
Duck	60 – 120 (g/t)
Goose	60 – 120 (g/t)

Sangrovit® Extra – extra alkaloids, extra profits.

Dodává:

BIOFERM[®]

BIOFERM CZ, spol. s r.o.

Banskobystrická 55, 621 00 Brno, tel.: 541 422 550, fax: 545 247 600
bioferm.cz@bioferm.com, www.bioferm.com